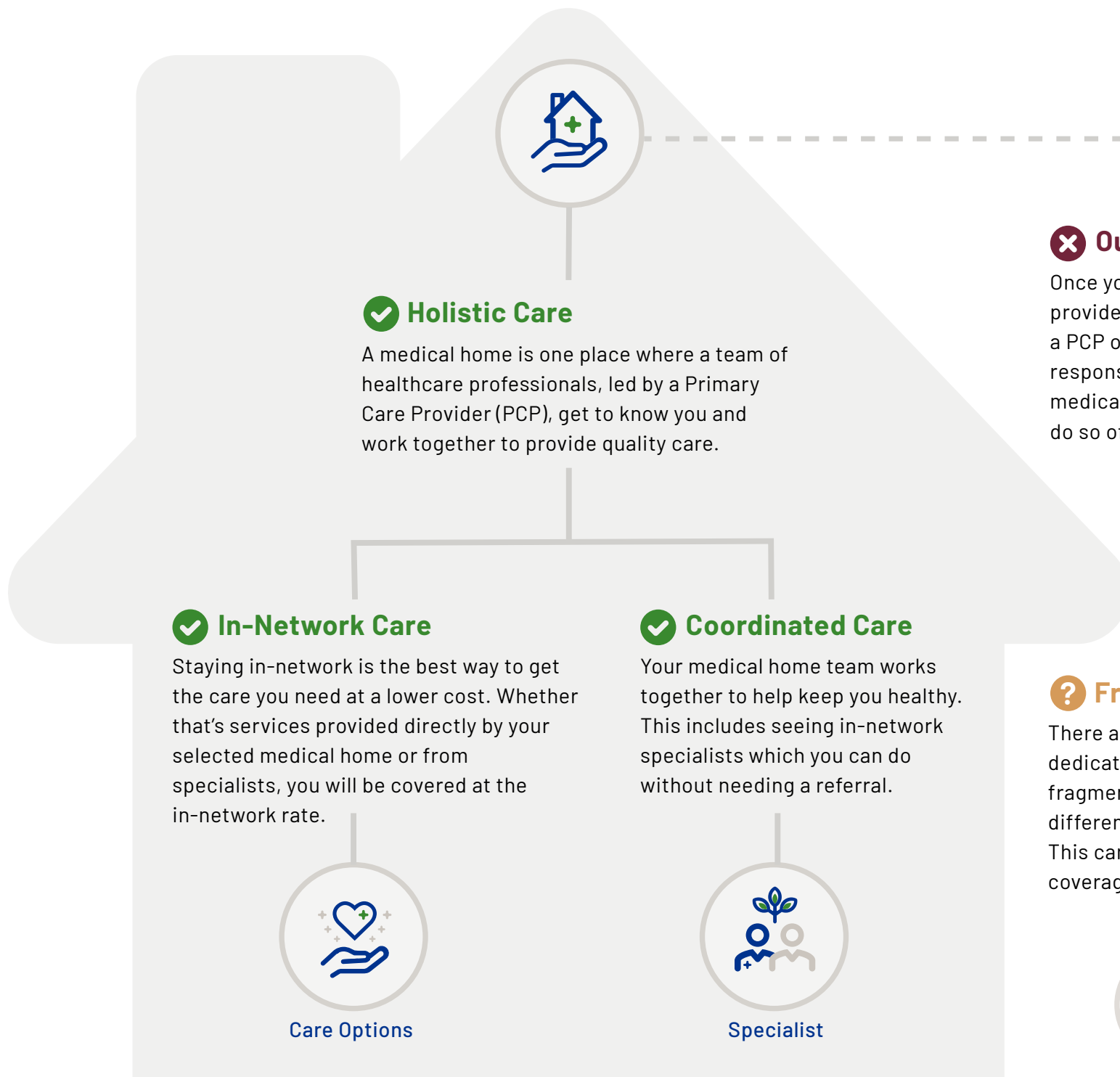


# Your Medical Home: The first stop for all your care



## ✗ Out-of-Network Costs

Once you've chosen a medical home, you can see any provider within that medical home. However, if you go to a PCP outside of your selected medical home, you may be responsible for additional costs. You may change your medical home (and PCP) at any time, but just be sure to do so officially before seeing another PCP.



## ? Fragmented Care

There are many benefits to having a medical home and a dedicated team of providers. The alternative is fragmented care where you might see a variety of different providers that aren't communicating efficiently. This can mean uncertainty as it relates to your care and coverage, along with higher costs.



Extra Bills



Repeat Tests

Learn more at [ProvidenceHealthPlan.com/MedicalHome](https://ProvidenceHealthPlan.com/MedicalHome)